

# grapes.msu.edu

[Home](#)[About Us](#)[Search](#)[Newsletters](#)[Weather /  
Climate](#)[Viticulture](#)[Pest  
management](#)[Scouting guide](#)[Publications](#)[Calendar of  
events](#)[Industry links](#)[Contacts](#)

Download [Adobe Acrobat Reader](#) to view pdf files.

## Pearl bodies

Tom Zabadal , MSU Horticulture

[Home](#) > [Scouting guide](#)> pearl bodies

Pearl bodies are enlarged cells on the surface layer of grapevine cells. They are often mistaken for the insect eggs and cause no harm to the vine.

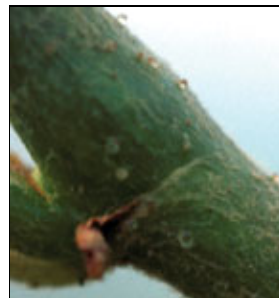


Photo: T. Zabadal

[Site map](#)[Copyright/Linking](#)

Funding for this web site provided by [Project GREEN](#), [American Farmland Trust](#), [EPA Region 5's Strategic Agricultural Initiative program](#), [The National Foundation for IPM Education](#), the [Center for Agricultural Partnerships](#) and the [MSU Integrated Pest Management Program](#) in collaboration with [MSU Extension](#) and the [Michigan Agricultural Experiment Station](#). Partially support from [NC-IPM Center](#).

05/26/11 Contact: [E. Haney](#)